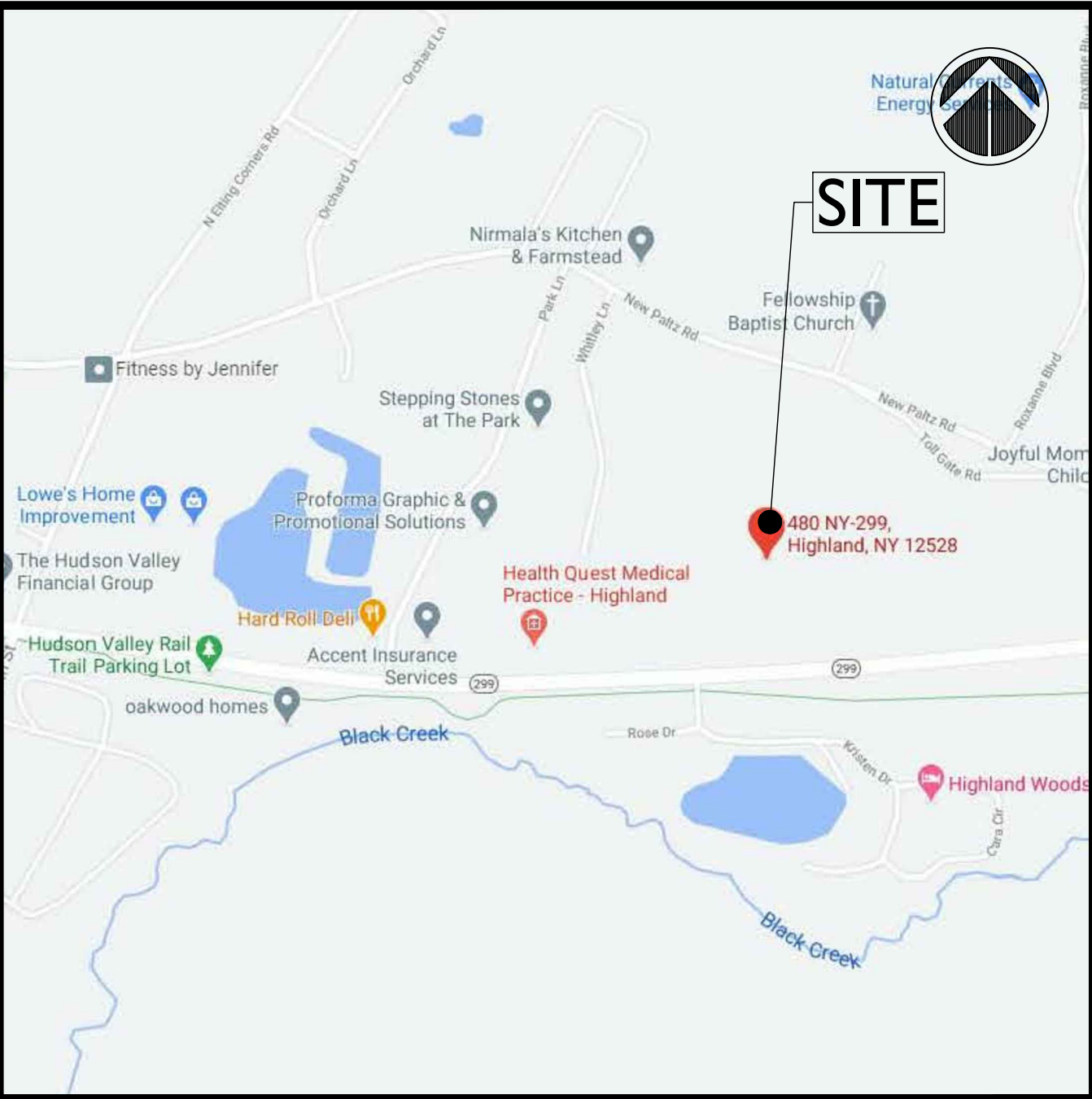


SITE PLAN SUBMISSION SET

FOR

ALLSPACE STORAGE, LLC

480 ROUTE 299
TOWN OF LLOYD
ULSTER COUNTY, NEW YORK
TAX MAP ID# 87.1-2-28



VICINITY MAP

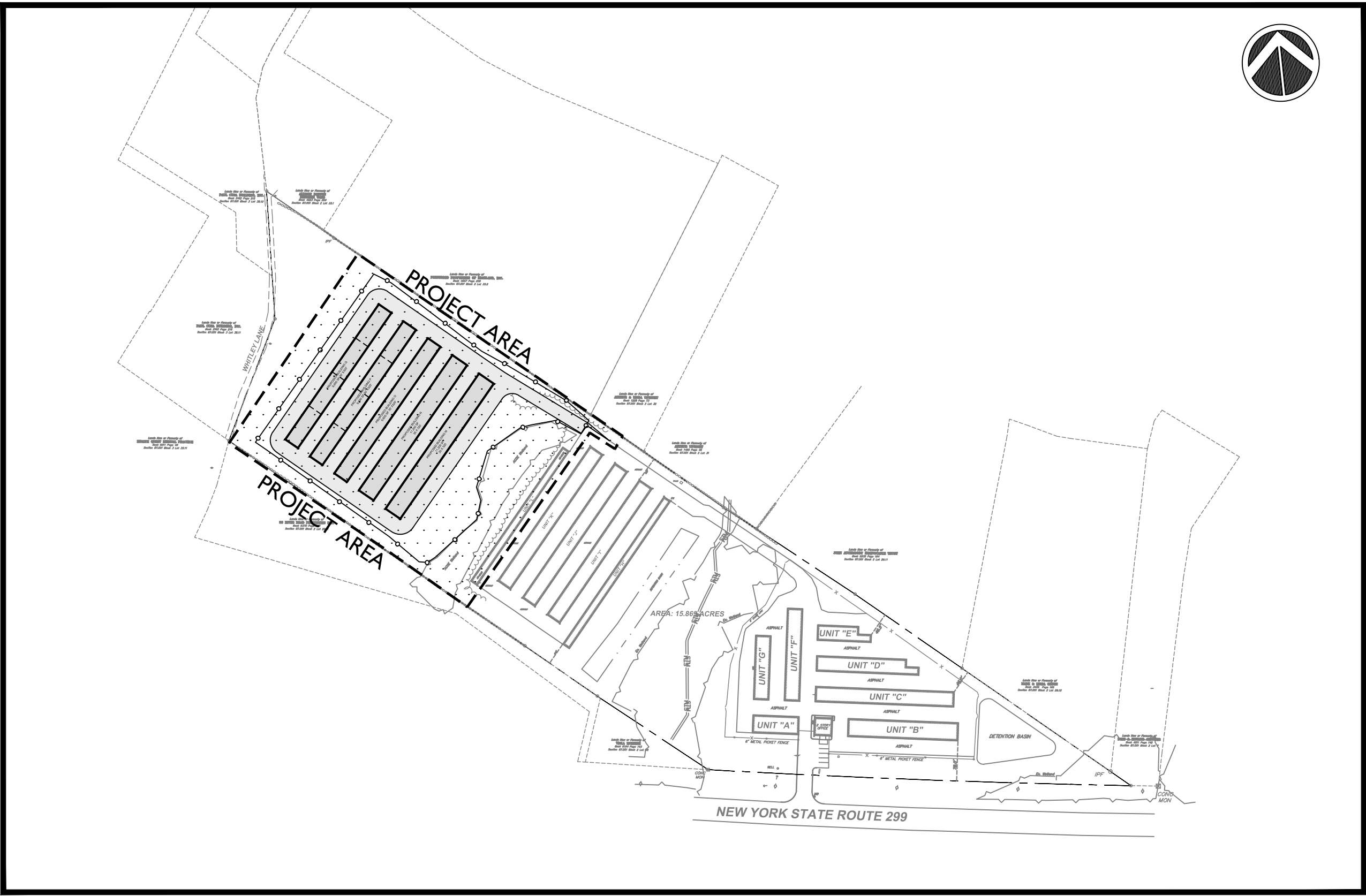
SCALE: 1"=1,000'



LOCATION MAP

SCALE: 1"=300'

ORIGINALLY SUBMITTED: APRIL 9, 2021



OVERALL SITE PLAN

SCALE: 1"=200'

SITE PLANNER / CIVIL ENGINEER:



- LAND PLANNING
- CIVIL ENGINEERING
- ENVIRONMENTAL SERVICES
- LAND SURVEYING
- LANDSCAPE ARCHITECTURE

LRC Engineering & Surveying, DPC
LRC Engineering and Surveying, LLC
LRC Environmental Services, Inc.

160 West Street, Suite E
Cromwell, CT 06416
Tel: 860.635.2877

85 Civic Center Plaza, Suite 103
Poughkeepsie NY 12601
Tel: 845.243.2880

1 International Blvd, Suite 400
Mahwah, NJ 07495
Tel: 908.603.5730

www.lreconsult.com

Rodney Morrison P.E. #074194

OWNER / APPLICANT:

ALL SPACE STORAGE, LLC
PO BOX 792
POUGHKEEPSIE, NY 12601

INDEX OF DRAWINGS

CV-I	COVER SHEET
EX-I	EXISTING CONDITIONS PLAN SHEET (BY OTHERS)
OP-I	OVERALL SITE PLAN
SP-I	SITE PLAN SHEET
SG-I	SITE GRADING / SITE DRAINAGE
EC-I	EROSION AND SEDIMENTATION CONTROL PLAN
LP-I	LIGHTING PLAN
DN-I	SITE / STORMWATER DETAILS
DN-2	EROSION CONTROL DETAILS

LEGEND:

- CIRF ○ CAPPED IRON ROD FOUND
CB ■ CATCH BASIN
DMH ○ DRAINAGE MANHOLE
ES < END SECTION
ELEC. TRANS. □ ELECTRIC TRANSFORMER
EMH ○ ELECTRIC MANHOLE
HYD ○ HYDRANT
LP ○ LIGHT POLE
SMH ○ SANITARY MANHOLE
TMH ○ TELEPHONE MANHOLE
TSCB □ TRAFFIC CONTROL BOX
TSP ○ TRAFFIC SIGNAL POLE
WV ○ WATER VALVE
UP ○ UTILITY POLE

Lands Now or Formerly of
PAUL CUSA BUILDERS, INC.
Book 2162 Page 215
Section 87.001 Block 3 Lot 38.12

Lands Now or Formerly of
ALLISON BARTON
KENNETH WARD
Book 4923 Page 200
Section 87.001 Block 2 Lot 33.1

Lands Now or Formerly of
PREFERRED PROPERTIES OF HIGHLAND, INC.
Book 4007 Page 206
Section 87.001 Block 2 Lot 33.2

Lands Now or Formerly of
PAUL CUSA BUILDERS, INC.
Book 2162 Page 215
Section 87.001 Block 3 Lot 38.11

Lands Now or Formerly of
HEALTH QUEST MEDICAL PRACTICE
Book 6211 Page 49
Section 87.001 Block 3 Lot 33.11

Lands Now or Formerly of
ARTHUR & LINDA UPRIGHT
Book 1228 Page 73
Section 87.001 Block 2 Lot 32

Lands Now or Formerly of
ARTHUR UPRIGHT
Book 1485 Page 48
Section 87.001 Block 2 Lot 31

Lands Now or Formerly of
36 RIVER ROAD PROPERTIES INC.
Book 6370 Page 173
Section 87.001 Block 2 Lot 29.11

TAX PARCEL NUMBER:

TOWN OF LLOYD, ULSTER COUNTY, NEW YORK
SEC. 87.001 – BLK. 2– LOT 28

GENERAL NOTES:

NORTH IS ORIENTED TO DEED REFERENCE 1

UNAUTHORIZED ALTERATION OR ADDITION TO A SURVEY MAP BEARING A LICENSED LAND SURVEYOR'S SEAL IS A VIOLATION OF SECTION 7209, SUBDIVISION 2 OF THE NEW YORK STATE EDUCATION LAW.

ONLY COPIES FROM THE ORIGINAL OF THIS SURVEY MARKED WITH AN ORIGINAL OF THE LAND SURVEYOR'S INKED SEAL OR HIS EMBOSSED SEAL SHALL BE CONSIDERED TO BE VALID TRUE COPIES .

SURVEYED FROM RECORD DESCRIPTION AND AS PER MAP REFERENCE NO. 1.

SUBJECT TO COVENANTS, EASEMENTS, RESTRICTIONS, CONDITIONS AND AGREEMENTS OF RECORD.

SURVEY SUBJECT TO ANY RIGHT, TITLE OR INTEREST THE PUBLIC MAY HAVE FOR HIGHWAY USE.

SURVEY SHOWN IS SUBJECT TO ANY SUBSURFACE CONDITIONS THAT MAY EXIST, IF ANY.

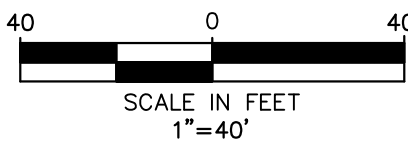
PAVEMENT EDGES ARE APPROXIMATE ONLY DUE TO THE 12"+ SNOW CONDITIONS AND NUMEROUS SNOW BANKS.

MAP REFERENCES:

1. "MAP OF SURVEY PREPARED FOR APOLLO GROUP, LLC." PREPARED BY CHAZEN ENGINEERING AND LAND SURVEYING, DATED OCTOBER 31, 2002

DEED REFERENCES:

1. PHILLIP MESSINA TO APOLLO GROUP, LLC, DATED NOVEMBER 3, 2002 AND RECORDED IN THE ULSTER COUNTY CLERKS OFFICE IN DEED BOOK 3452 AT PAGE 312.

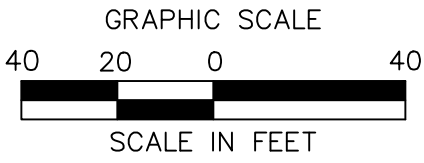


																																																																																																																																																																																																																																																																																																																																																																																																																																																																																																																																																																																																																																																																																																																																																																																																																																																																																																																																																																																																																																																																																																																																																																																																																																																																																																																																																																																																																										</
--	--	--	--	--	--	--	--	--	--	--	--	--	--	--	--	--	--	--	--	--	--	--	--	--	--	--	--	--	--	--	--	--	--	--	--	--	--	--	--	--	--	--	--	--	--	--	--	--	--	--	--	--	--	--	--	--	--	--	--	--	--	--	--	--	--	--	--	--	--	--	--	--	--	--	--	--	--	--	--	--	--	--	--	--	--	--	--	--	--	--	--	--	--	--	--	--	--	--	--	--	--	--	--	--	--	--	--	--	--	--	--	--	--	--	--	--	--	--	--	--	--	--	--	--	--	--	--	--	--	--	--	--	--	--	--	--	--	--	--	--	--	--	--	--	--	--	--	--	--	--	--	--	--	--	--	--	--	--	--	--	--	--	--	--	--	--	--	--	--	--	--	--	--	--	--	--	--	--	--	--	--	--	--	--	--	--	--	--	--	--	--	--	--	--	--	--	--	--	--	--	--	--	--	--	--	--	--	--	--	--	--	--	--	--	--	--	--	--	--	--	--	--	--	--	--	--	--	--	--	--	--	--	--	--	--	--	--	--	--	--	--	--	--	--	--	--	--	--	--	--	--	--	--	--	--	--	--	--	--	--	--	--	--	--	--	--	--	--	--	--	--	--	--	--	--	--	--	--	--	--	--	--	--	--	--	--	--	--	--	--	--	--	--	--	--	--	--	--	--	--	--	--	--	--	--	--	--	--	--	--	--	--	--	--	--	--	--	--	--	--	--	--	--	--	--	--	--	--	--	--	--	--	--	--	--	--	--	--	--	--	--	--	--	--	--	--	--	--	--	--	--	--	--	--	--	--	--	--	--	--	--	--	--	--	--	--	--	--	--	--	--	--	--	--	--	--	--	--	--	--	--	--	--	--	--	--	--	--	--	--	--	--	--	--	--	--	--	--	--	--	--	--	--	--	--	--	--	--	--	--	--	--	--	--	--	--	--	--	--	--	--	--	--	--	--	--	--	--	--	--	--	--	--	--	--	--	--	--	--	--	--	--	--	--	--	--	--	--	--	--	--	--	--	--	--	--	--	--	--	--	--	--	--	--	--	--	--	--	--	--	--	--	--	--	--	--	--	--	--	--	--	--	--	--	--	--	--	--	--	--	--	--	--	--	--	--	--	--	--	--	--	--	--	--	--	--	--	--	--	--	--	--	--	--	--	--	--	--	--	--	--	--	--	--	--	--	--	--	--	--	--	--	--	--	--	--	--	--	--	--	--	--	--	--	--	--	--	--	--	--	--	--	--	--	--	--	--	--	--	--	--	--	--	--	--	--	--	--	--	--	--	--	--	--	--	--	--	--	--	--	--	--	--	--	--	--	--	--	--	--	--	--	--	--	--	--	--	--	--	--	--	--	--	--	--	--	--	--	--	--	--	--	--	--	--	--	--	--	--	--	--	--	--	--	--	--	--	--	--	--	--	--	--	--	--	--	--	--	--	--	--	--	--	--	--	--	--	--	--	--	--	--	--	--	--	--	--	--	--	--	--	--	--	--	--	--	--	--	--	--	--	--	--	--	--	--	--	--	--	--	--	--	--	--	--	--	--	--	--	--	--	--	--	--	--	--	--	--	--	--	--	--	--	--	--	--	--	--	--	--	--	--	--	--	--	--	--	--	--	--	--	--	--	--	--	--	--	--	--	--	--	--	--	--	--	--	--	--	--	--	--	--	--	--	--	--	--	--	--	--	--	--	--	--	--	--	--	--	--	--	--	--	--	--	--	--	--	--	--	--	--	--	--	--	--	--	--	--	--	--	--	--	--	--	--	--	--	--	--	--	--	--	--	--	--	--	--	--	--	--	--	--	--	--	--	--	--	--	--	--	--	--	--	--	--	--	--	--	--	--	--	--	--	--	--	--	--	--	--	--	--	--	--	--	--	--	--	--	--	--	--	--	--	--	--	--	--	--	--	--	--	--	--	--	--	--	--	--	--	--	--	--	--	--	--	--	--	--	--	--	--	--	--	--	--	--	--	--	--	--	--	--	--	--	--	--	--	--	--	--	--	--	--	--	--	--	--	--	--	--	--	--	--	--	--	--	--	--	--	--	--	--	--	--	--	--	--	--	--	--	--	--	--	--	--	--	--	--	--	--	--	--	--	--	--	--	--	--	--	--	--	--	--	--	--	--	--	--	--	--	--	--	--	--	--	--	--	--	--	--	--	--	--	--	--	--	--	--	--	--	--	--	--	--	--	--	--	--	--	--	--	--	--	--	--	--	--	--	--	--	--	--	--	--	--	--	--	--	--	--	--	--	--	--	--	--	--	--	--	--	--	--	--	--	--	--	--	--	--	--	--	--	--	--	--	--	--	--	--	--	--	--	--	--	--	--	--	--	--	--	--	--	--	--	--	--	--	--	--	--	--	--	--	--	--	--	--	--	--	--	--	--	--	--	--	--	--	--	--	--	--	--	--	--	--	--	--	--	--	--	--	--	--	--	--	--	--	--	--	--	--	--	--	--	--	--	--	--	--	--	--	--	--	--	--	--	--	--	--	--	--	--	--	--	--	--	--	--	--	--	--	--	--	--	--	--	--	--	--	--	--	--	--	--	--	--	--	--	--	--	--	--	--	--	--	--	--	--	--	--	--	--	--	--	--	--	--	--	--	--	--	--	--	--	--	--	--	--	--	--	--	--	--	--	--	--	--	--	--	--	--	--	--	--	--	--	--	--	--	--	--	--	--	--	--	--	--	--	--	--	--	--	--	--	--	--	--	--	--	--	--	--	--	--	--	--	--	--	--	--	--	--	--	--	--	--	--	--	--	--	--	--	--	--	--	--	--	--	--	--	--	--	--	--	--	--	--	--	--	--	--	--	--	--	--	--	--	--	--	--	--	--	--	--	--	--	--	--	--	--	--	--	--	--	--	--	--	--	--	--	--	--	--	--	--	--	--	--	--	--	--	--	--	--	--	--	--	--	--	--	--	--	--	--	--	--	--	--	--	--	--	--	--	--	--	--	--	--	--	--	--	--	--	--	--	--	--	--	--	--	--	--	--	--	--	--	--	--	--	--	--	--	--	--	--	--	--	--	--	--	--	--	--	--	--	--	--	--	--	--	--	--	--	--	--	--	--	--	--	----



GENERAL NOTES

1. ALL CONSTRUCTION SHALL COMPLY WITH TOWN OF LLOYD REQUIREMENTS AND SPECIFICATIONS.
2. THE CONTRACTOR IS RESPONSIBLE FOR OBTAINING ALL NECESSARY PERMITS REQUIRED BY GOVERNMENT AGENCIES PRIOR TO CONSTRUCTION. THE CONTRACTOR SHALL POST ALL BONDS, PAY ALL FEES, PROVIDE PROOF OF INSURANCE AND PROVIDE TRAFFIC CONTROL NECESSARY FOR THIS WORK.
3. REFER TO OTHER PLANS AND DETAIL SHEETS FOR ADDITIONAL INFORMATION. THE CONTRACTOR SHALL VERIFY ALL SITE CONDITIONS IN THE FIELD AND CONTACT THE SITE ENGINEER IF THERE ARE ANY QUESTIONS OR CONFLICTS REGARDING THE CONSTRUCTION DOCUMENTS AND/OR FIELD CONDITIONS SO THAT APPROPRIATE REVISIONS CAN BE MADE PRIOR TO BIDDING. ANY CONFLICT BETWEEN DRAWINGS AND THE SPECIFICATIONS SHALL BE CONFIRMED WITH THE LOCAL CONSTRUCTION MANAGER PRIOR TO BIDDING.
4. REFER TO THE DETAIL SHEETS FOR PAVEMENT, CURBING, AND SIDEWALK INFORMATION.
5. ALTERNATIVE METHODS AND PRODUCTS OTHER THAN THOSE SPECIFIED MAY BE USED IF REVIEWED AND APPROVED BY THE SITE ENGINEER, AND THE APPROPRIATE REGULATORY AGENCIES PRIOR TO INSTALLATION.
6. THE CONTRACTOR SHALL RESTORE ANY OF THE FOLLOWING IF THEY ARE NOTED TO REMAIN: UTILITY STRUCTURE, PIPE, UTILITY, PAVEMENT, CURBS, SIDEWALKS, OR LANDSCAPED AREAS DISTURBED DURING CONSTRUCTION TO THEIR ORIGINAL CONDITION OR BETTER TO THE SATISFACTION OF THE TOWN OF LLOYD.
7. PAVEMENT MARKINGS SHALL BE FAST DRYING TYPE IN ACCORDANCE WITH TOWN OF LLOYD SPECIFICATIONS.
8. THE CONTRACTOR SHALL SUBMIT SHOP DRAWINGS OF ALL PRODUCTS, MATERIALS AND PLANT SPECIFICATIONS TO THE SITE ENGINEER AND OWNER FOR REVIEW AND APPROVAL PRIOR TO FABRICATION OR DELIVERY TO THE SITE. ALLOW A MINIMUM OF 14 WORKING DAYS FOR REVIEW. APPROVED SHOP DRAWINGS WILL BE PROVIDED BY THE ENGINEER AND COPIED TO THE TOWN OF LLOYD.
9. THE PROJECT DRAWINGS ARE GENERALLY DIAGRAMMATIC IN INDICATING THE PRESENCE OF EXISTING UNDERGROUND UTILITIES. INFORMATION ON EXISTING UTILITIES HAS BEEN COMPILED FROM AVAILABLE INFORMATION INCLUDING UTILITY COMPANY AND MUNIOPAL RECORD MAPS AND FIELD SURVEY AND IS NOT GUARANTEED TO BE CORRECT OR COMPLETE. UTILITIES ARE SHOWN TO ALERT THE CONTRACTOR OF THEIR PRESENCE AND THE CONTRACTOR IS SOLELY RESPONSIBLE FOR DETERMINING ACTUAL LOCATIONS AND ELEVATIONS OF ALL UTILITIES AND SERVICES. WHEN THE UTILITIES ARE TO BE LEFT IN PLACE, THE CONTRACTOR SHALL PROVIDE ADEQUATE MEANS OF SUPPORT AND PROTECTION DURING THE EXCAVATION AND BACKFILLING OPERATIONS.
10. PRIOR TO DEMOLITION OR CONSTRUCTION THE CONTRACTOR SHALL CONTACT "CALL BEFORE YOU DIG" AT 1-800-962-7962 AT LEAST 72 HOURS BEFORE COMMENCEMENT OF WORK TO VERIFY ALL UTILITY LOCATIONS. CONTRACTOR SHALL NOT INTERRUPT EXISTING UTILITIES SERVICING FACILITIES OCCUPIED AND USED BY THE OWNER OR OTHERS DURING OCCUPIED HOURS.
11. IF ANY UNCHARTED OR INCORRECTLY CHARTED EXISTING PIPING OR OTHER UTILITY IS UNCOVERED DURING EXCAVATION, THE CONTRACTOR SHALL CONSULT THE SITE ENGINEER IMMEDIATELY FOR DIRECTIONS BEFORE PROCEEDING FURTHER WITH THE WORK.
12. STORAGE OF FLAMMABLE AND HAZARDOUS MATERIALS SHALL BE IN COMPLIANCE WITH THE NYS FIRE AND BUILDING CODE.
13. CONTRACTOR TO PROVIDE SITE ENGINEER WITH SUBMITTALS. ONCE APPROVED, COPIES WILL BE SUPPLIED TO CITY ENGINEER AND APPROPRIATE CITY DEPARTMENTS.
14. NO HERBICIDES OR PESTICIDES WILL BE USED DURING THE OPERATION OF THE SITE.



Date

Description

Revisions

1

2

3

4

5

6

7

8

9

10

11

12

13

14

15

16

17

18

19

20

21

22

23

24

25

26

27

28

29

30

31

32

33

34

35

36

37

38

39

40

41

42

43

44

45

46

47

48

49

50

51

52

53

54

55

56

57

58

59

60

61

62

63

64

65

66

67

68

69

70

71

72

73

74

75

76

77

78

79

80

81

82

83

84

85

86

87

88

89

90

91

92

93

94

95

96

97

98

99

100

101

102

103

104

105

106

107

108

109

110

111

112

113

114

115

116

117

118

119

120

121

122

123

124

125

126

127

128

129

130

131

132

133

134

135

136

137

138

139

140

141

142

143

144

145

146

147

148

149

150

151

152

153

154

155

156

157

158

159

160

161

162

163

164

165

166

167

168

169

170

171

172

173

174

175

176

177

178

179

180

181

182

183

184

185

186

187

188

189

190

191

192

193

194

195

196

197

198

199

200

201

202

203

204

205

206

207

208

209

210

211

212

213

214

215

216

217

218

219

220

221

222

223

224

225

226

227

228

229

230

231

232

233

234

235

236

237

238

239

240

241

242

243

244

245

246

247

248

249

250

251

252

253

254

255

256

257

258

259

260

261

262

263

264

265

266

267

268

269

270

271

272

273

274

275

276

277

278

279

280

281

282

283

284

285

286

287

288

289

290

291

292

293

294

295

296

297

298

299

300

301

302

303

304

305

306

307

308

309

310

311

312

313

314

315

316

317

318

319

320

321

322

323

324

325

326

327

328

329

330

331

332

333

334

335

336

337

338

339

340

341

342

343

344

345

346

347

348

349

350

351

352

353

354

355

356

357

358

359

360

361

362

363

364

365

366

367

368

369

370

371

372

373

374

375

376

377

378

379

380

381

382

383

384

385

386

387

388

389

390

391

392

393

394

395

396

397

398

399

400

401

402

403

404

405

406

407

408

409

410

411

412

413

414

415

416

417

418

419

420

421

422

423

424

425

426

427

428

429

430

431

432

433

434

435

436

437

438

439

440

441

442

443

444

445

446

447

448

449

450

451

452

453

454

455

456

457

458

459

460

461

462

463

464

465

466

467

468

469

470

471

472

473

474

475

476

477

478

479

480

481

482

483

484

485

486

487

488

489

490

491

492

493

494

495

496

497

498

499

500

501

502

503

504

505

506

507

508

509

510

511

512

513

514

515

516

517

518

519

520

521

522

523

524

525

526

527

528

529

530

531

532

533

534

535

536

537

538

539

540

541

542

543

544

545

546

547

548

549

550

551

552

553

554

555

556

557

558

559

560

561

562

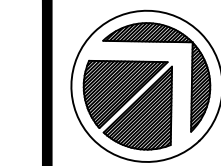
563

564

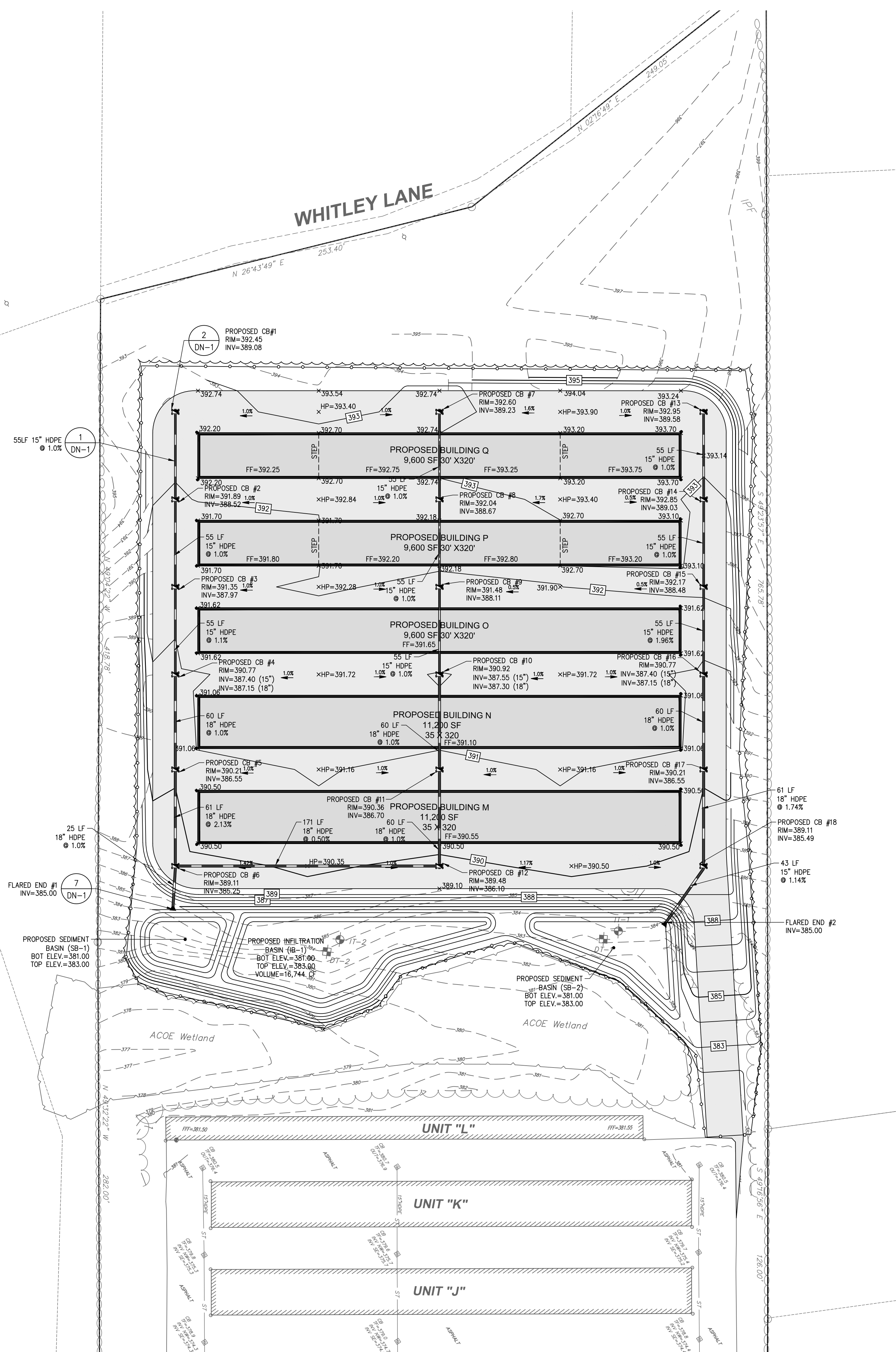
565

566

567



X:\Jobs\2019\19-2451-Page Park-Apollo Group-Allspace Lloyd Expansion\DWG\SG19245101.dwg 4/7/2021 7:33 AM Surran



COMPACTION AND BACKFILL NOTES

UNLESS OTHERWISE SPECIFIED OR APPROVED BY THE SITE ENGINEER, ALL SITE SUBGRADE AND BACKFILL FOR ALL STRUCTURES INCLUDING, BUT NOT LIMITED TO, PARKING LOT SUBGRADE, ROAD SUBGRADE, CONCRETE PADS AND SIDEWALKS, WATER LINES AND STRUCTURES, SEWER LINES AND STRUCTURES, STORM LINES AND STRUCTURES, TRASH PADS/ENCLOSURES, AND SITE ELECTRICAL AND CONDUIT, SHALL BE COMPACTED IN ACCORDANCE WITH THE FOLLOWING STANDARD.

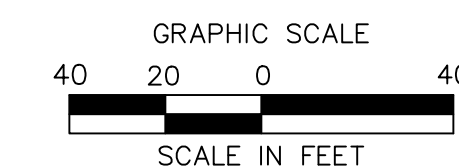
METHODS OF CONSTRUCTION SHALL BE IN ACCORDANCE WITH THE NEW YORK STATE DEPARTMENT OF TRANSPORTATION (NYSDOT) STANDARD SPECIFICATIONS FOR CONSTRUCTION AND MATERIALS, DATED MAY 1, 2008, AND ALL ADDENDA THERE TO

GRADING AND DRAINAGE NOTES

- ALL EXISTING STRUCTURES NOTED TO BE REMOVED. FENCING, TREES, ETC., WITHIN CONSTRUCTION AREA SHALL BE REMOVED & DISPOSED OF OFF SITE. ANY BURNING ON SITE SHALL BE SUBJECT TO LOCAL ORDINANCES.
- CONTRACTOR SHALL NOTIFY ALL UTILITY COMPANIES HAVING UNDERGROUND UTILITIES ON SITE OR IN RIGHT-OF-WAY PRIOR TO EXCAVATION. CONTRACTOR SHALL CONTACT UTILITY LOCATING COMPANY AND LOCATE ALL UTILITIES PRIOR TO GRADING START.
- SITE GRADING SHALL NOT PROCEED UNTIL EROSION CONTROL MEASURES HAVE BEEN INSTALLED.

LEGEND

- PROPOSED ASPHALT
- X 162 PROPOSED SPOT ELEVATION
- 162 PROPOSED MINOR CONTOUR LINE
- 160 PROPOSED MAJOR CONTOUR LINE
- PROPOSED CATCH BASIN



• Land Planning
• Civil Engineering
• Environmental Services
• Land Surveying
• Landscape Architecture
160 West Street, Suite E
Greenwell, CT 06416
Tel: 860.635.2877
85 Civic Center Plaza, Suite 103
Poughkeepsie, NY 12601
Tel: 845.243.2880
1 International Blvd., Suite 400
Mahwah, NJ 07495
Tel: 908.603.5730
www.lrcconsult.com
LRC Engineering & Surveying, DPC
LRC Engineering & Surveying, LLC
LRC Environmental Services, Inc.

SITE GRADING / DRAINAGE PLAN

**ALLSPACE SELF STORAGE
EXPANSION**
480 ROUTE 299
TOWN OF LLOYD
ULSTER COUNTY, NEW YORK

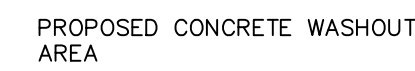
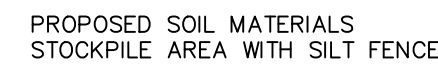
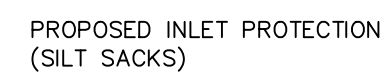
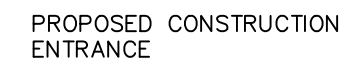
Design/Calcs	BLS	CAD File	SG19245101.dwg	Sheet No.
Drawn	SMC	Project No.	19-2451	
Checked	KFC	Date	2021-04-09	
Approved	REM	Scale	1"=40'	

SG-1





PROPOSED SILT FENCE



EROSION AND SEDIMENT CONTROL PLAN

1. LAND DISTURBANCE WILL BE KEPT TO A MINIMUM; RESTABILIZATION WILL BE SCHEDULED AS SOON AS PRACTICABLE.
2. SILTATION FENCE WILL BE INSTALLED AT ALL CULVERT OUTLETS AND ALONG THE TOE OF ALL CRITICAL CUT AND FILL SLOPES.
3. ALL EROSION AND SEDIMENTATION CONTROL MEASURES SHALL BE CONSTRUCTED IN ACCORDANCE WITH THE STANDARDS AND SPECIFICATIONS OF THE NEW YORK STATE EROSION & SEDIMENT CONTROL "BLUE BOOK" LATEST EDITION.
4. EROSION AND SEDIMENT CONTROL MEASURES SHALL BE INSTALLED PRIOR TO CONSTRUCTION WHENEVER POSSIBLE.
5. ALL CONTROL MEASURES SHALL BE MAINTAINED IN EFFECTIVE CONDITION THROUGHOUT THE CONSTRUCTION PERIOD.
6. ADDITIONAL CONTROL MEASURES SHALL BE INSTALLED DURING THE CONSTRUCTION PERIOD, IF NECESSARY OR REQUIRED.
7. SEDIMENT REMOVED FROM CONTROL STRUCTURES WILL BE DISPOSED OF IN A MANNER WHICH IS CONSISTENT WITH THE INTENT OF THE PLAN.
8. DUST CONTROL AND ANTI-TRACKING MAINTENANCE TO BE ADDRESSED AND RESOLVED ON A DAILY BASIS.

INSTALLATION OF SEDIMENTATION AND EROSION CONTROL MEASURES

- I. SILTATION FENCE
 - A. DIG A SIX INCH TRENCH ON THE UPHILL SIDE OF THE DESIGNATED FENCE LINE LOCATION.
 - B. POSITION THE POST AT THE BACK OF THE TRENCH (DOWNHILL SIDE), AND HAMMER THE POST AT LEAST 2.0 FEET INTO THE GROUND.
 - C. LAY THE BOTTOM SIX INCHES OF THE FABRIC INTO THE TRENCH TO PREVENT UNDERMINING BY STORM WATER RUN-OFF.
 - D. BACKFILL THE TRENCH AND COMPACT.

OPERATION AND MAINTENANCE OF SEDIMENTATION AND EROSION CONTROL MEASURES

- I. SILTATION FENCE
ALL SILTATION FENCES SHALL BE INSPECTED ONCE EVERY SEVEN DAYS. ALL
DETERIORATED FABRIC AND DAMAGED POSTS SHALL BE REPLACED AND PROPERLY
REPOSITIONED IN ACCORDANCE WITH THIS PLAN.

SEDIMENT DEPOSITS SHALL BE REMOVED FROM BEHIND THE FENCE WHEN THEY EXCEED A HEIGHT OF ONE FOOT.

- II. INLET PROTECTION
ALL INLET PROTECTION DEVICES SHALL BE INSPECTED DAILY BY THE QUALIFIED INSPECTOR TO ENSURE THAT SEDIMENT IS NOT ENTERING ANY STORM DRAIN INLETS. PROTECTION DEVICES ARE TO BE REPAIRED AND/OR REPLACED IF NOT FUNCTIONING AS DESIGNED.

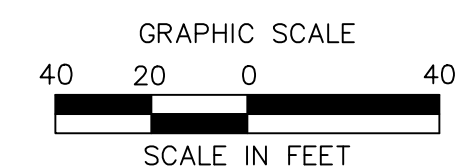
TEMPORARY VEGETATIVE STABILIZATION

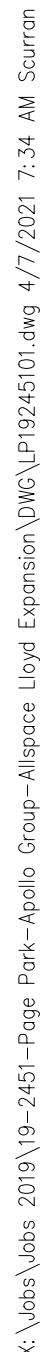
1. ESTABLISHMENT OF TEMPORARY STANDS OF GRASS BY SEEDING AND MULCHING EXPOSED SOILS THAT WILL BE EXPOSED. SEED BARE SOIL WITHIN SEVEN (7) DAYS OF EXPOSURE, UNLESS CONSTRUCTION WILL BEGIN WITHIN FOURTEEN (14) DAYS. IF CONSTRUCTION IS SUSPENDED, OR SECTIONS COMPLETED, AREAS SHOULD BE SEEDDED DOWN OR MULCHED DOWN IMMEDIATELY. THIS WILL TEMPORARILY STABILIZE THE SOIL WITH A VEGETATIVE COVER THAT WILL PREVENT DAMAGE FROM WIND AND WATER EROSION AND SEDIMENTATION.
2. INSTALLATION: FERTILIZING, SEEDING, AND MULCHING WILL BE USED AS A TEMPORARY E&S CONTROL MEASURE ON ALL NON-PAVED DISTURBED AREAS. EXPOSED SOILS NOT SUBJECT TO CONSTRUCTION TRAFFIC SHALL BE SEEDDED OR COVERED BY MULCH WITHIN 7 DAYS, INCLUDING STOCKPILED SOIL MATERIALS. WITH REGARD TO THE TEMPORARY SEED MIX, REFER TO THE SEEDING MIXTURE TABLE PROVIDED ON THE E&S CONTROL PLAN DETAIL SHEET.
3. OPERATIONS AND MAINTENANCE: INSPECT SEEDDED AREA AT LEAST ONCE A WEEK FOR EROSION AND MULCH MOVEMENT AND RILL EROSION. WHERE SEED HAS MOVED OR WHERE SOIL EROSION HAS OCCURRED, DETERMINE CAUSE OF THE FAILURE. BIRD FEEDING MAY BE A CAUSE OF EROSION. IF EROSION IS CAUSED BY BIRDS, RE-SEED AND RE-APPLY MULCH. IF MOVEMENT WAS A RESULT OF WIND, REPAIR EROSION DAMAGE, REAPPLY SEED, MULCH AND APPLY MULCH ANCHORING. IF FAILURE WAS CAUSED BY CONCENTRATED RUNOFF, INSTALL ADDITIONAL MEASURES TO CONTROL WATER AND SEDIMENT MOVEMENT, REPAIR EROSION DAMAGE, RE-SEED AND RE-APPLY MULCH WITH ANCHORING OR USE EROSION CONTROL BLANKET.

SEEDING AND MULCHING

ANY DISTURBED AREAS THAT WILL BE LEFT EXPOSED FOR MORE THAN 7 DAYS AND NOT SUBJECT TO CONSTRUCTION TRAFFIC, SHALL IMMEDIATELY RECEIVE SEEDING AND MULCHING. DISTURBED AREAS SHALL BE LIMBED AND BE COVERED WITH A LAYER OF TOPSOIL PRIOR TO SEEDING. SEEDING WILL BE INSPECTED FOR BARE SPOTS, WASH-OUTS, AND HEALTHY GROWTH. IF REQUIRED ADDITIONAL SEEDING SHALL BE PERFORMED. THE SEED MIX SPECIFIED FOR THIS SITE IS FROM THE NEW YORK STATE STANDARDS AND SPECIFICATIONS FOR EROSION AND SEDIMENT CONTROL, TABLE 3.2 (SITE CHOICE 1B) WHICH IS AS FOLLOWS:

	Pure Live Seed Values	
SPECIES (% by weight)	lbs/1000SF	lbs/acre
15% fine fescue	2.0 - 2.6	85 - 114
20% perennial ryegrass	0.6 - 0.8	26 - 35
65% kentucky bluegrass blend	<u>0.4 - 1.6</u>	<u>19 - 26</u>
	3.0 - 4.0	130 - 175

[illegible]




AI CUT SHEET

NOT TO SCALE
WALL PACK LIGHTING

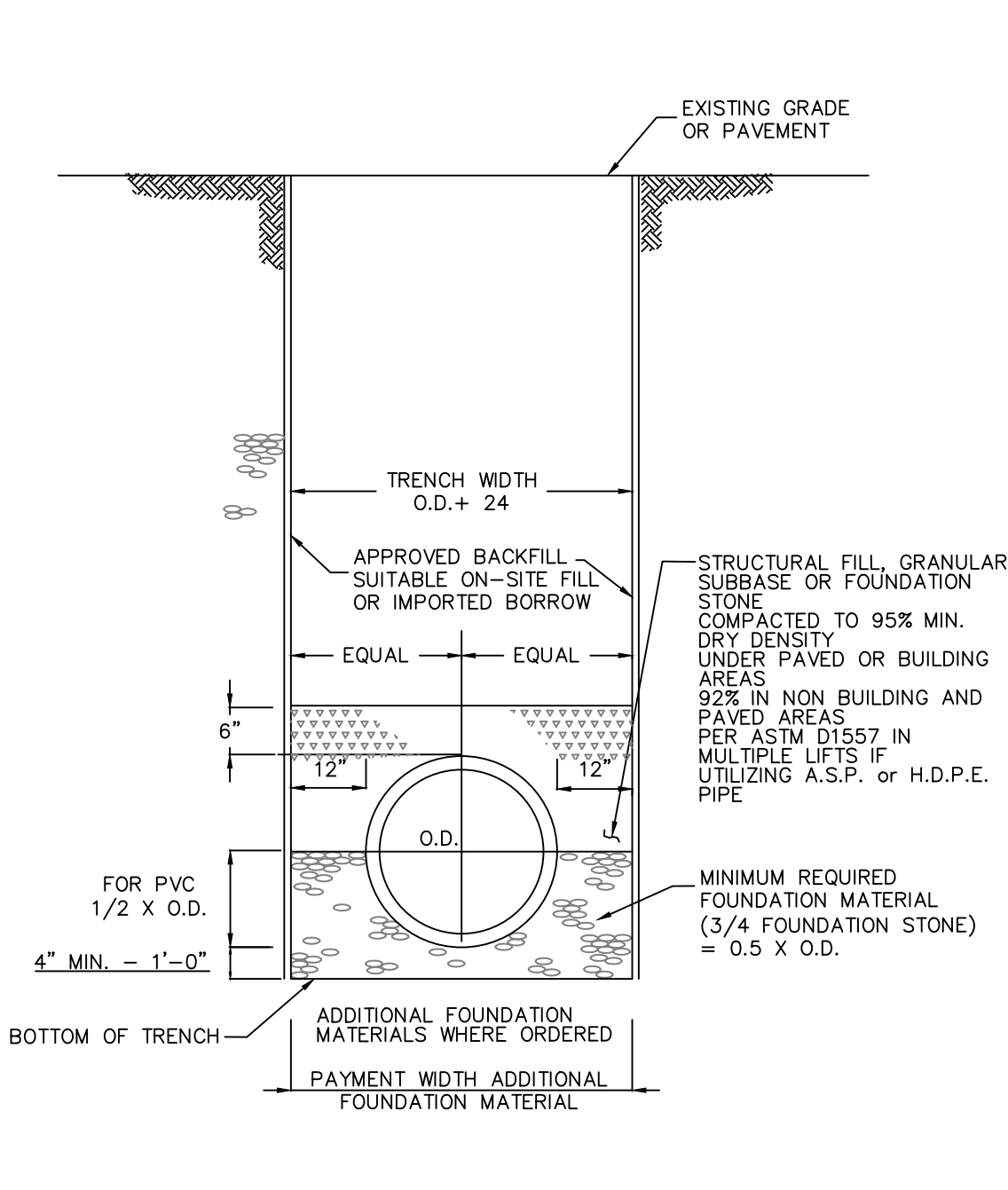
GRAPHIC SCALE

40 20 0 40

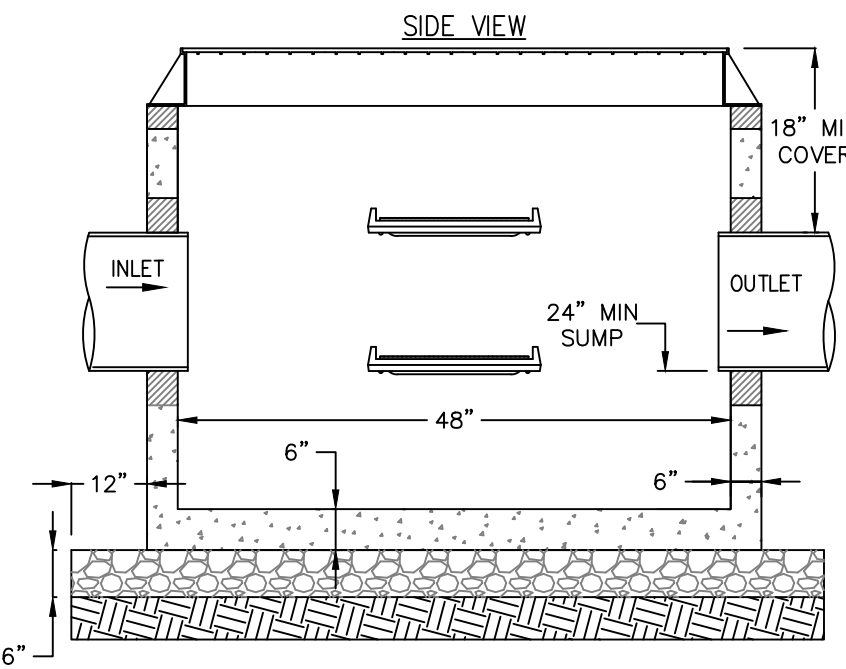
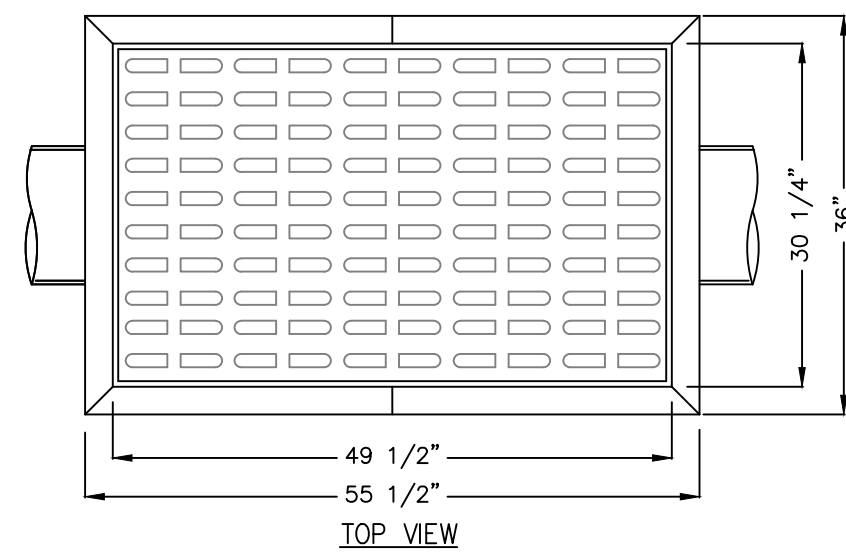


SCALE IN FEET

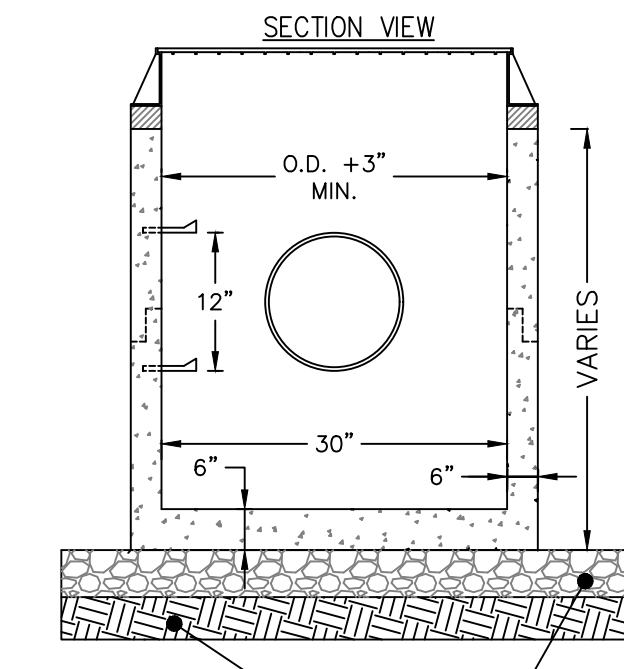
LP-1



1
DN-1
TYPICAL STORM SEWER TRENCH SECTION
NOT TO SCALE

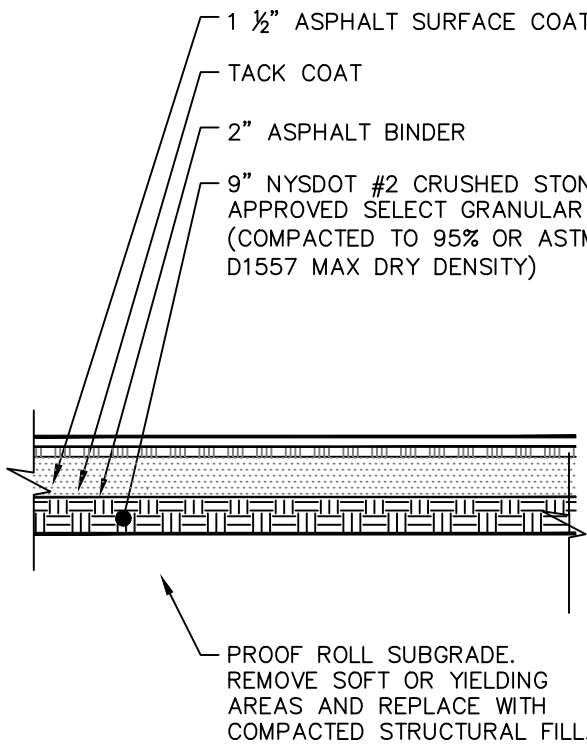


2
DN-1
CURB LESS TYPE CATCH BASIN
NOT TO SCALE

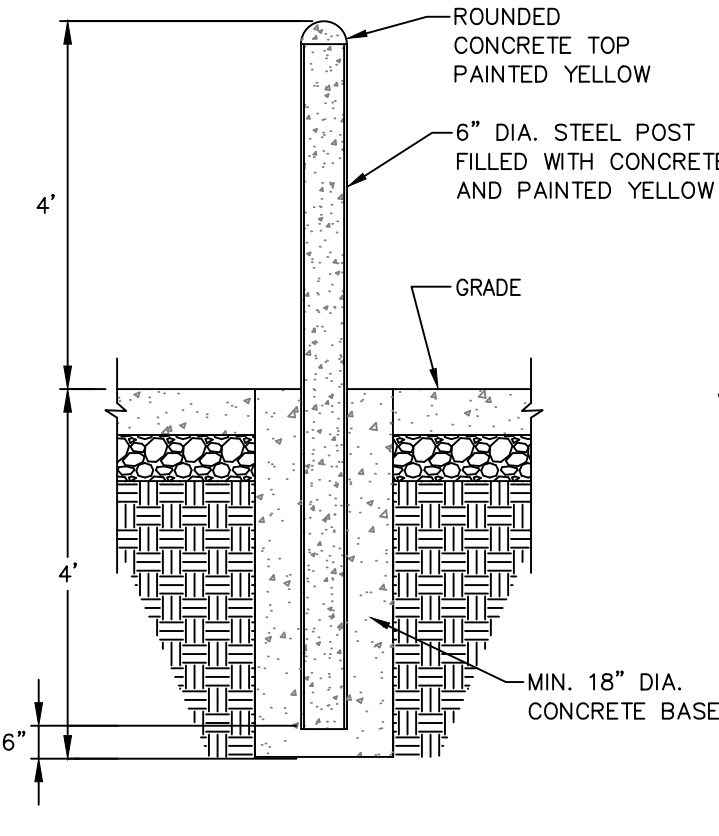


COMPACTED 3/4" CRUSHED STONE PLACED
ON COMPACTED STABLE SUBGRADE
(APPROVED BY THE CERTIFYING ENGINEER)

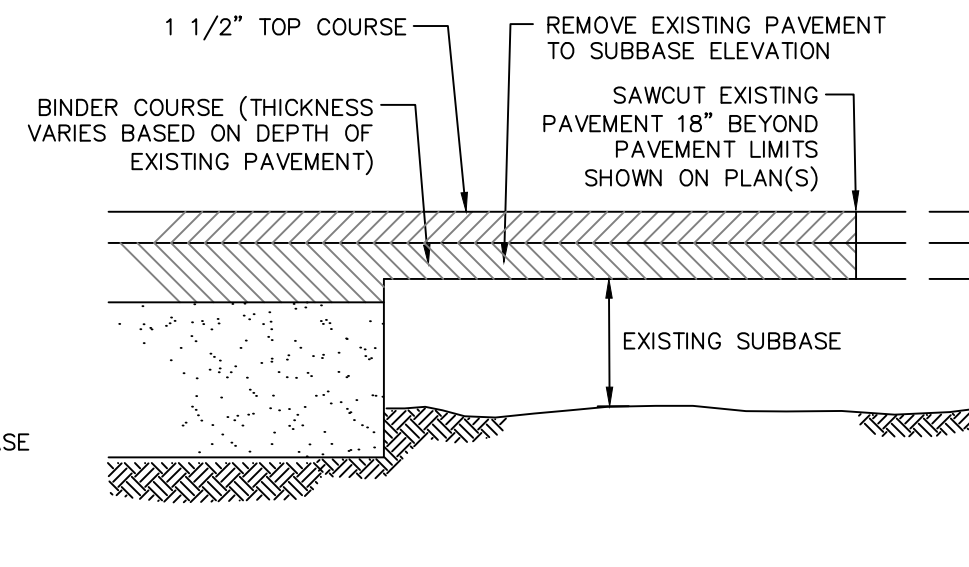
- NOTES:
1. PRECAST CONCRETE CATCH BASIN SECTIONS AS MANUFACTURED BY FORT MILLER OR APPROVED EQUAL.
 2. CATCH BASIN SHALL BE PRECAST CONCRETE. DESIGNED FOR H20 VEHICULAR LOADING AND 25% IMPACT.
 3. FRAME AND COVER SHALL BE DESIGNED FOR H20 VEHICULAR LOADING AND 25% IMPACT. FRAME TO BE GENERAL FOUNDRIES, INC. MODEL #23408 OR APPROVED EQUAL.
 4. CONCRETE CATCH BASIN CASTING CLEAR OPENING DIMENSION MUST MATCH FRAME AND GRATE CLEAR OPENING DIMENSION.
 5. CATCH BASINS HAVING A DEPTH GREATER THAN 48" FROM FINISHED SURFACE TO THE TOP OF THE CONCRETE BASE SHALL BE PROVIDED WITH STEPS.
 6. BACKFILL USING TRENCH BACKFILL, COMPACTED IN 6" LIFTS.
 7. SUMPS FOR CATCH BASINS SHALL BE 24".



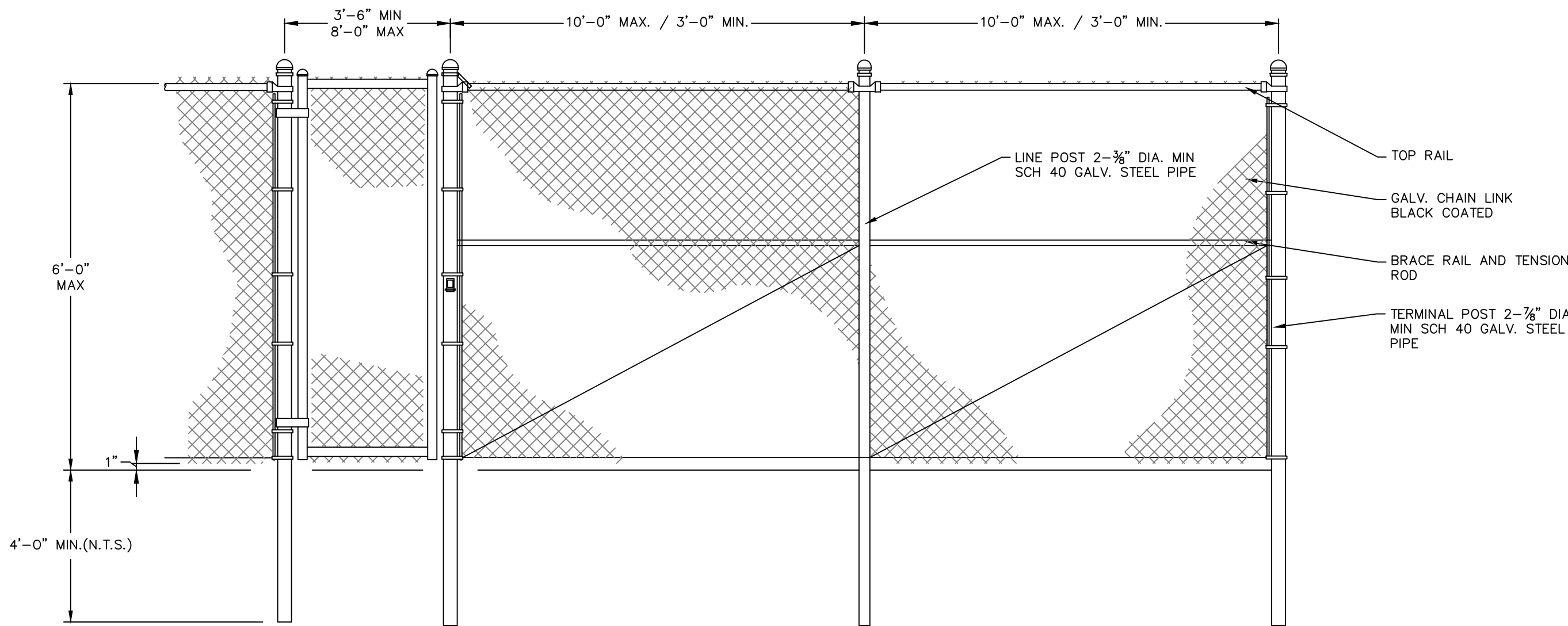
3
DN-1
STANDARD ASPHALT PAVING
NOT TO SCALE



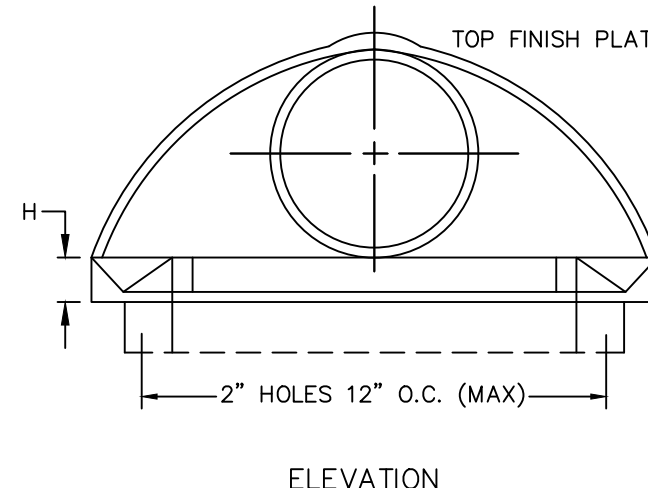
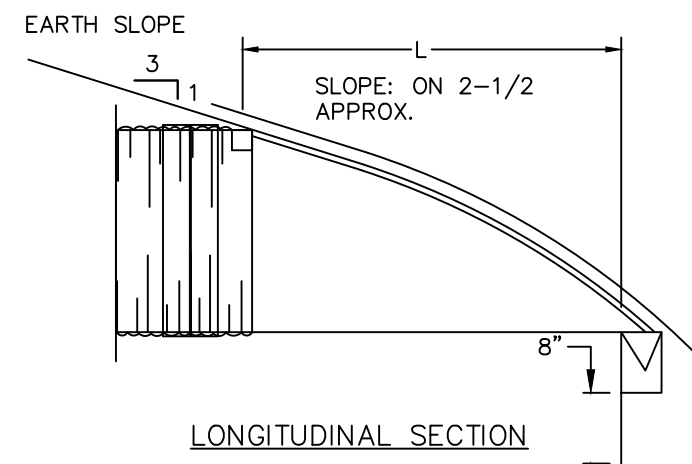
4
DN-1
BOLLARD POST DETAIL
NOT TO SCALE



5
DN-1
PAVEMENT TRANSITION DETAIL
NOT TO SCALE



6
DN-1
DIRECT PUSH CHAIN LINK DETAIL
NOT TO SCALE



7
DN-1
FLARED END SECTION
NOT TO SCALE



Revisions		Description		Date
1				
2				
3				
4				
5				
6				
7				
8				
9				
10				
11				
12				
13				
14				
15				
16				
17				
18				
19				
20				
21				
22				
23				
24				
25				
26				
27				
28				
29				
30				
31				
32				
33				
34				
35				
36				
37				
38				
39				
40				
41				
42				
43				
44				
45				
46				
47				
48				
49				
50				
51				
52				
53				
54				
55				
56				
57				
58				
59				
60				
61				
62				
63				
64				
65				
66				
67				
68				
69				
70				
71				
72				
73				
74				
75				
76				
77				
78				
79				
80				
81				
82				
83				
84				
85				
86				
87				
88				
89				
90				
91				
92				
93				
94				
95				
96				
97				
98				
99				
100				

- Land Planning
- Civil Engineering
- Environmental Services
- Land Surveying
- Landscape Architecture

160 West Street, Suite 1
Cromwell, CT 06416
Tel: 860.635.2877

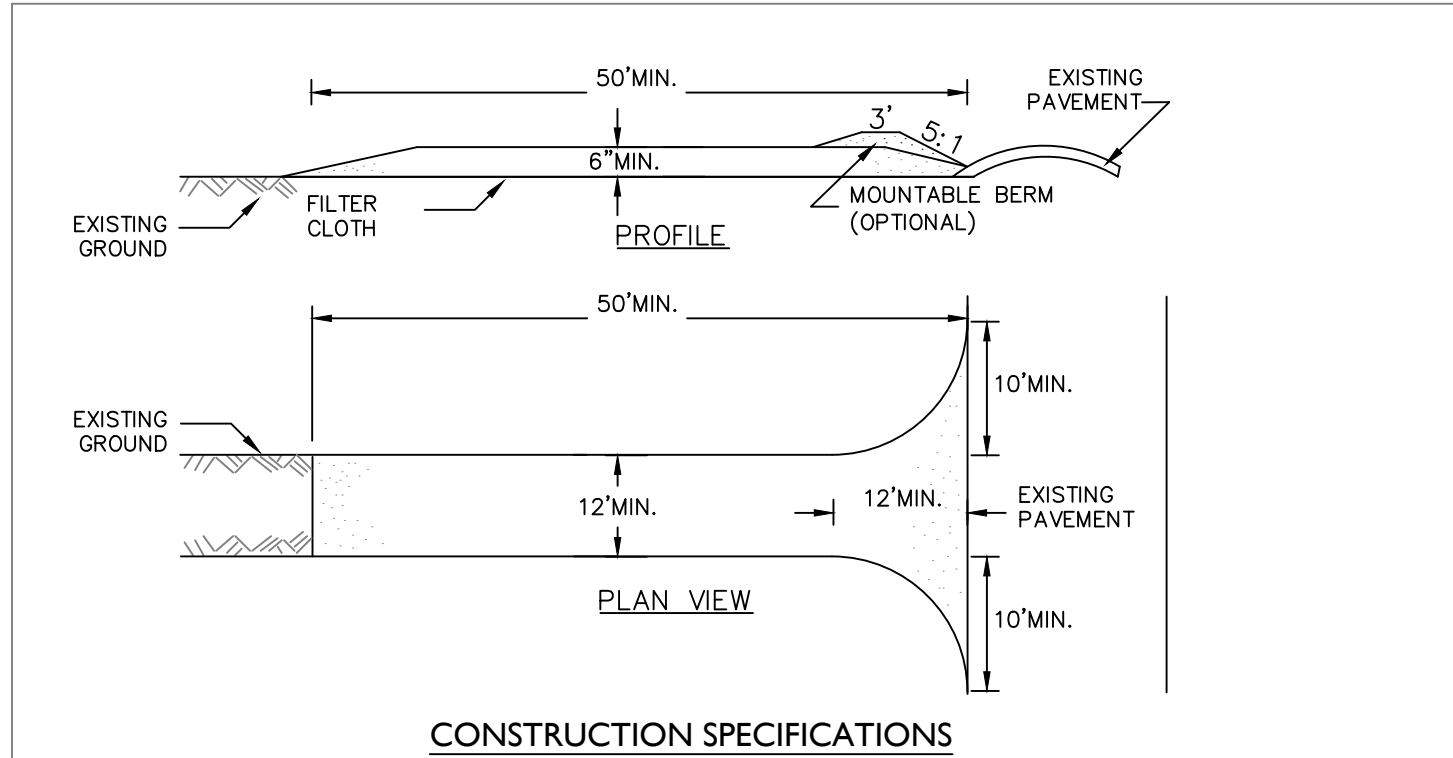
85 Civic Center Plaza, Suite 103
Poughkeepsie NY 12601
Tel: 845.243.2880

1 International Blvd, Suite 400
Mahwah, NJ 07495
Tel: 908.603.5730

www.lrcconsult.com

LRC Engineering & Surveying, DPC
LRC Engineering & Surveying, LLC
LRC Environmental Services, Inc.

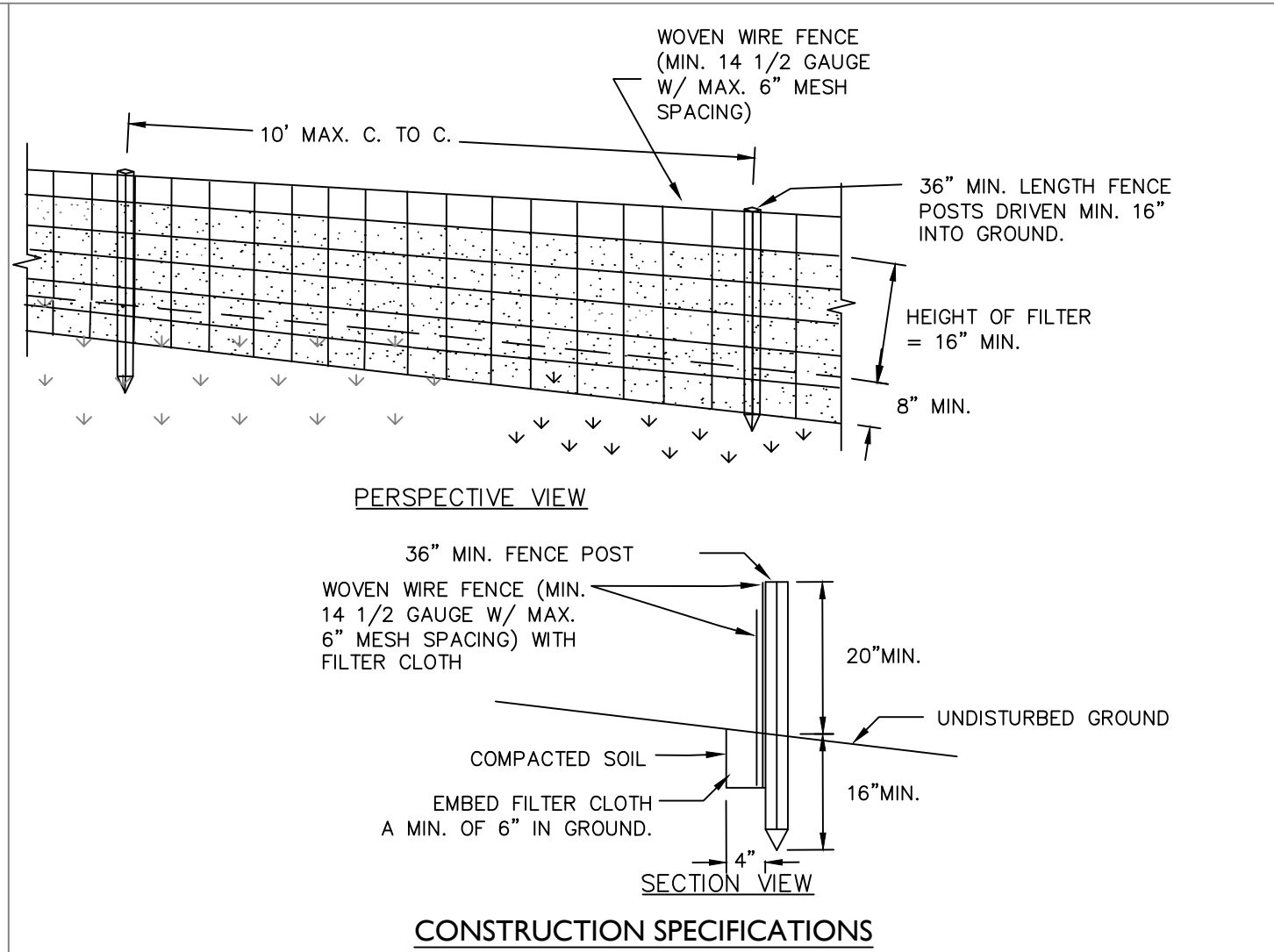
Design/Calcs	BLS	CAD File	DN19245101.dwg	Sheet No.
Drawn	SMC	Project No.	19-2451	DN-1
Checked	KFC	Date	2021-04-09	
Approved	REM	Scale	1"=100'	



1. STONE SIZE — USE 3"-4" ANGULAR STONE, OR RECLAIMED OR RECYCLED CONCRETE EQUIVALENT.
2. LENGTH — NOT LESS THAN 50 FEET (EXCEPT ON A SINGLE RESIDENCE LOT WHERE A 30 FOOT MINIMUM LENGTH WOULD APPLY).
3. THICKNESS — NOT LESS THAN SIX (6) INCHES.
4. WIDTH — TWELVE (12) FOOT MINIMUM, BUT NOT LESS THAN THE FULL WIDTH AT POINTS WHERE INGRESS OR EGRESS OCCURS. TWENTY-FOUR (24) FOOT IF SINGLE ENTRANCE TO SITE.
5. FILTER CLOTH — WILL BE PLACED OVER THE ENTIRE AREA PRIOR TO PLACING OF STONE.
6. SURFACE WATER — ALL SURFACE WATER FLOWING OR DIVERTED TOWARD CONSTRUCTION ENTRANCES SHALL BE PIPED ACROSS THE ENTRANCE. IF PIPING IS IMPRACTICAL, A MOUNTABLE BERM WITH 5:1 SLOPES WILL BE PERMITTED.
7. MAINTENANCE — THE ENTRANCE SHALL BE MAINTAINED IN A CONDITION WHICH WILL PREVENT TRACKING OR FLOWING OF SEDIMENT ONTO PUBLIC RIGHTS-OF-WAY, ALL SEDIMENT SPILLED, DROPPED, WASHED OR TRACTED ONTO PUBLIC RIGHTS-OF-WAY MUST BE REMOVED IMMEDIATELY.
8. WHEN WASHING IS REQUIRED, IT SHALL BE DONE ON A AREA STABILIZED WITH STONE AND WHICH DRAINS INTO AN APPROVED SEDIMENT TRAPPING DEVICE.
9. PERIODIC INSPECTION AND NEEDED MAINTENANCE SHALL BE PROVIDED AFTER EACH RAIN.

U.S. DEPARTMENT OF AGRICULTURE
NATURAL RESOURCES CONSERVATION SERVICE
NEW YORK STATE DEPARTMENT OF ENVIRONMENTAL CONSERVATION
NEW YORK STATE SOIL & WATER CONSERVATION COMMITTEE

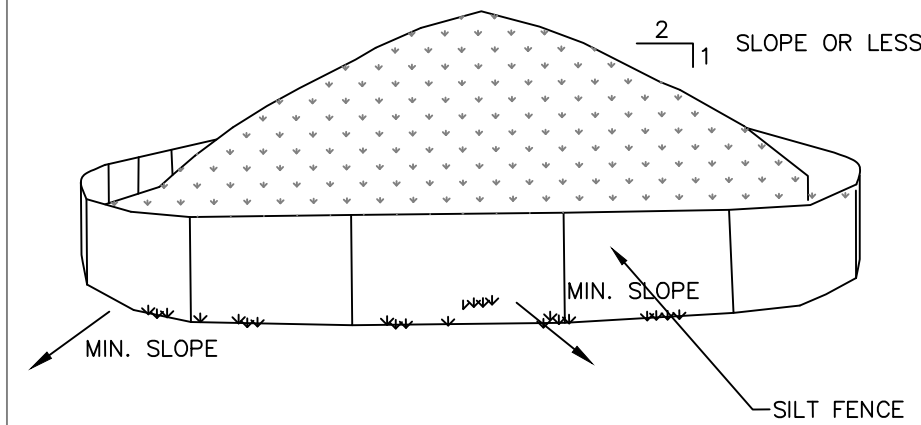
1
DN-2
STABILIZED
CONSTRUCTION
ENTRANCE



1. WOVEN WIRE FENCE TO BE FASTENED SECURELY TO FENCE POSTS WITH WIRE TIES OR STAPLES. POSTS SHALL BE STEEL EITHER "T" OR "U" TYPE OR HARDWOOD.
2. FILTER CLOTH TO BE TO BE FASTENED SECURELY TO WOVEN WIRE FENCE WITH TIES SPACED EVERY 24" AT TOP AND MID SECTION. FENCE SHALL BE WOVEN WIRE, 12 1/2 GAUGE, 6" MAXIMUM MESH OPENING.
3. WHEN TWO SECTIONS OF FILTER CLOTH ADJOIN EACH OTHER THEY SHALL BE OVERLAPPED BY SIX INCHES AND FOLDED. FILTER CLOTH SHALL BE EITHER FILTER X, MIRAFI 100X, STABILINKA T140N, OR APPROVED EQUIVALENT.
4. PREFABRICATED UNITS SHALL BE GEOFAB, ENVIROFENCE, OR APPROVED EQUIVALENT.
5. MAINTENANCE SHALL BE PERFORMED AS NEEDED AND MATERIAL REMOVED WHEN "BULGES" DEVELOP IN THE SILT FENCE.

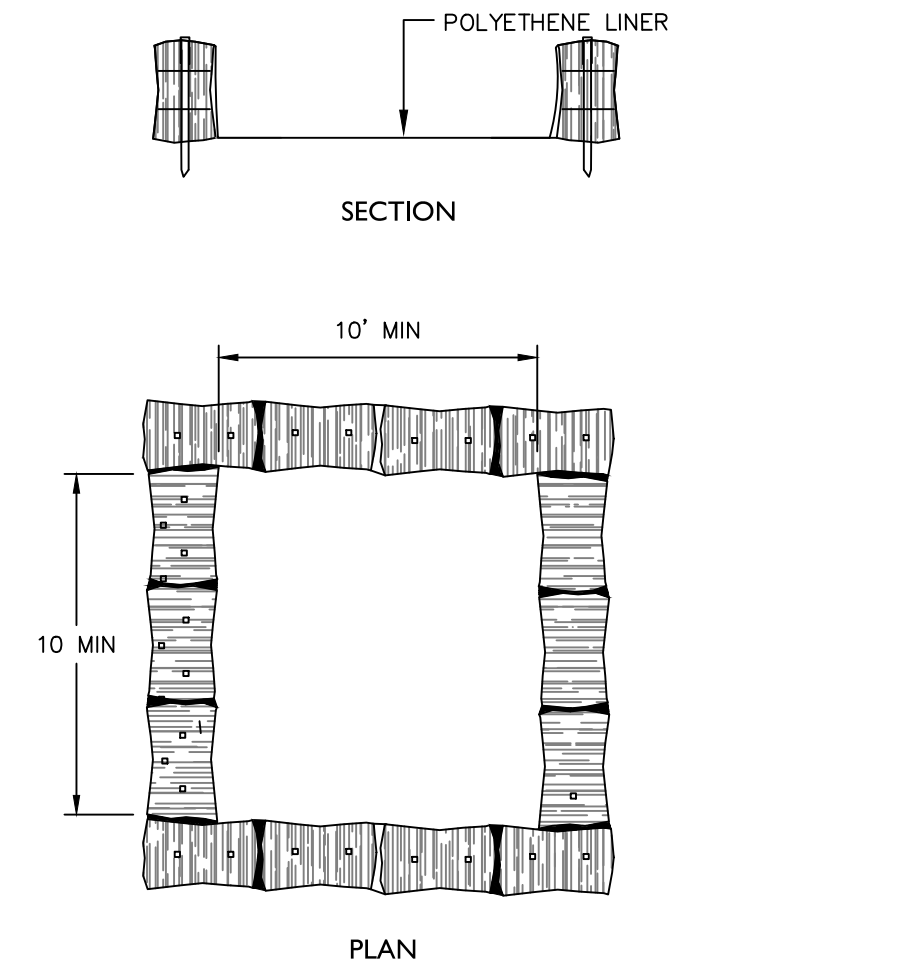
U.S. DEPARTMENT OF AGRICULTURE
NATURAL RESOURCES CONSERVATION SERVICE
NEW YORK STATE DEPARTMENT OF ENVIRONMENTAL CONSERVATION
NEW YORK STATE SOIL & WATER CONSERVATION COMMITTEE

2
DN-2
SILT FENCE



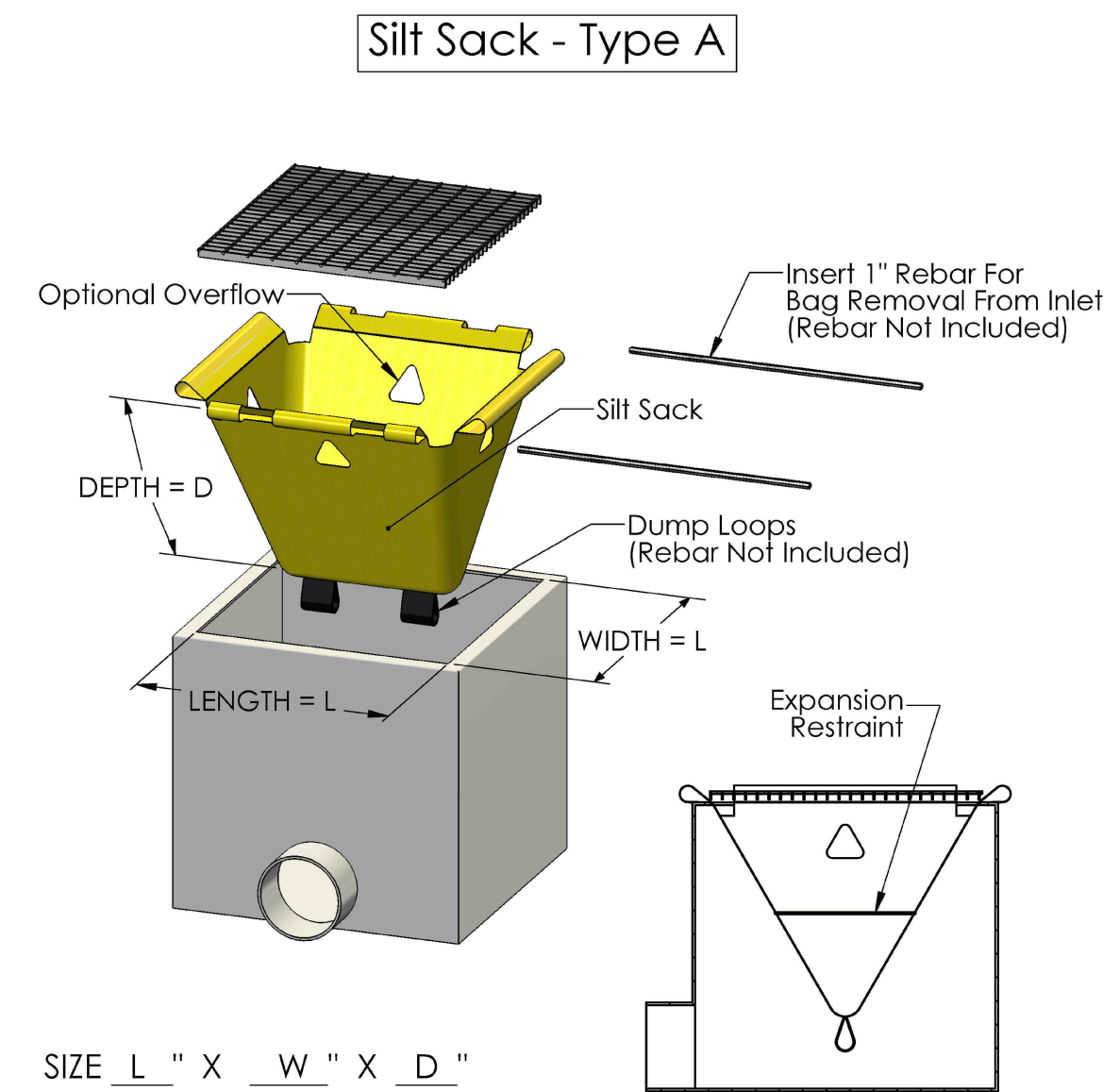
- NOTES:
1. AREA CHOSEN FOR STOCKPILING OPERATIONS SHALL BE DRY AND STABLE.
2. MAXIMUM SLOPE OF STOCKPILE SHALL BE 1V:2H.
3. UPON COMPLETION OF SOIL STOCKPILING, EACH PILE SHALL BE SURROUNDED WITH SILT FENCING, THEN STABILIZED WITH VEGETATION OR COVERED.
4. SEE SPECIFICATIONS FOR INSTALLATION OF SILT FENCE.
5. HAYBALES OR SILT SOCKS TO BE USED WHERE STOCKPILES ARE LOCATED ON PAVED AREAS.

3
DN-2
MATERIALS STOCKPILE
NOT TO SCALE



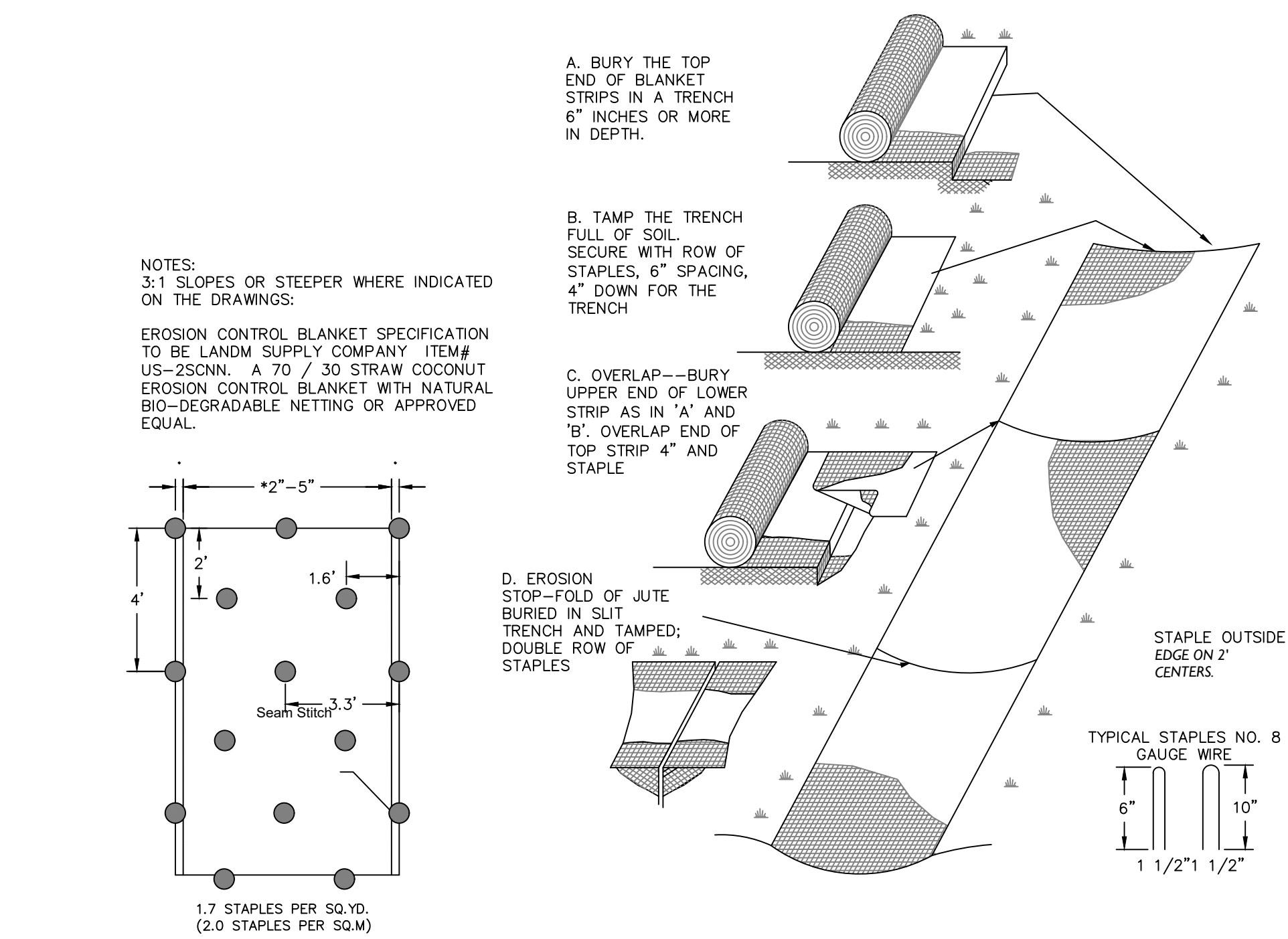
- NOTES:
1. CONCRETE WASHOUT SIGN TO BE INSTALLED WITHIN 30 FEET OF THE TEMPORARY CONCRETE WASHOUT FACILITY.
2. REMOVE HARDENED CONCRETE WHEN WITHIN 4" FROM TOP OF STRUCTURE.
3. CONSTRUCT NEW FACILITIES ONCE CURRENT FACILITIES ARE TWO-THIRDS FULL. IF CONCRETE HAS NOT HARDENED CONSTRUCT NEW FACILITIES ONCE CURRENT FACILITY IS TWO-THIRDS FULL.
4. LINERS, HAYBALES, ETC SHALL BE INSPECTED FOR DAMAGE. ANY DAMAGE SHALL BE REPAIRED PROMPTLY.
5. SEPARATE FACILITIES TO BE USED FOR VEHICLE WASHING IF NEEDED.
6. NO CONCRETE IS TO BE WASHOUT ON THE GROUND IN ANY LOCATION.

4
DN-2
ABOVE GROUND TEMPORARY
CONCRETE/VEHICLE WASHOUT FACILITY
NOT TO SCALE



ACF
ENVIRONMENTAL
2831 Cardwell Road
Richmond, VA 23234
WWW.ACFENVIRONMENTAL.COM

5
DN-2
SILT SACK DETAIL (CURBLESS CB)
NOT TO SCALE



6
DN-2
EROSION CONTROL MAT
NOT TO SCALE



Revisions				LRC GROUP				EROSION CONTROL DETAILS			
Date	Description	Design/Calcs	BLS	CAD File	DN19245102.dwg	Sheet No.	19-2451	ALLSPACE SELF STORAGE EXPANSION 480 ROUTE 299 TOWN OF LLOYD ULSTER COUNTY, NEW YORK			
Drawn	SMC	Project No.	19-2451	DN-2							
Checked	KFC	Date	2021-04-09								
Approved	REM	Scale	1"=100'								